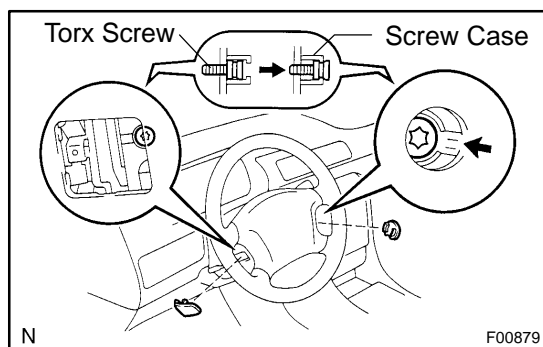


REMOVAL

1. REMOVE STEERING WHEEL PAD

NOTICE:

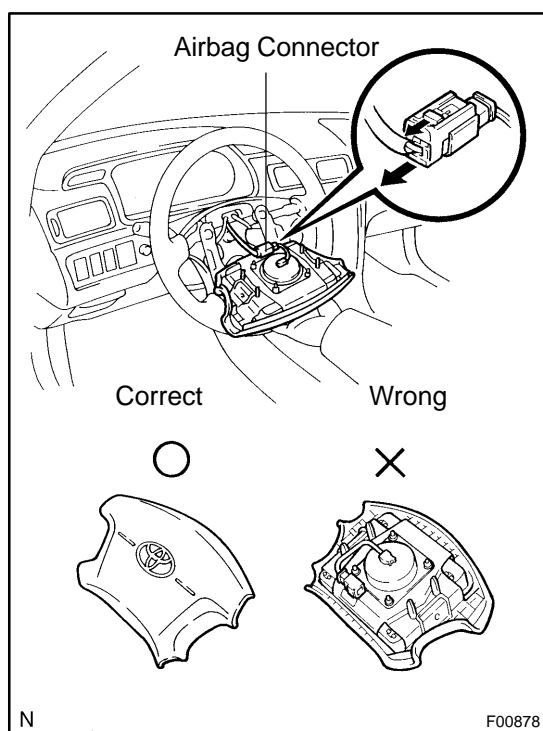
If the airbag connector is disconnected with the ignition switch at ON or ACC, DTCs will be recorded.



- Place the front wheels facing straight ahead.
- Remove the 2 steering wheel lower No.2 and No.3 covers.
- Using a torx socket wrench, loosen the 2 torx screws.

HINT:

Loosen the 2 screws until the groove along the screw circumference catches on the screw case.



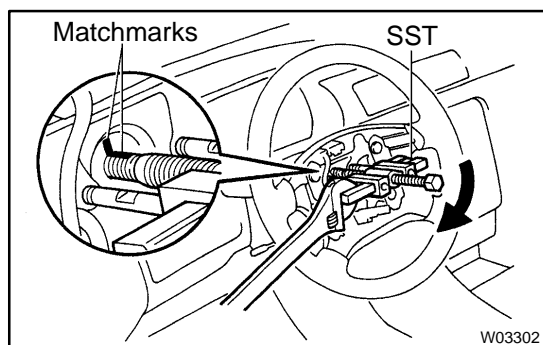
- Pull the pad out from the steering wheel and disconnect the airbag connector.

CAUTION:

- When storing the wheel pad, keep the upper surface of the pad facing upward.
- Never disassemble the wheel pad.

NOTICE:

When removing the wheel pad, take care not to pull the airbag wire harness.



2. REMOVE STEERING WHEEL

- Disconnect the connector.
- Remove the steering wheel set nut.
- Place matchmarks on the steering wheel and main shaft assembly.
- Using SST, remove the wheel.

SST 09950-50012 (09951-05010, 09952-05010, 09953-05020, 09954-05020)

- 3. REMOVE UPPER AND LOWER COLUMN COVERS**
 - (a) Remove the lower No.2 cover from the lower cover.
 - (b) Remove the 3 screws, upper and lower column covers.

- 4. REMOVE FRONT DOOR INSIDE SCUFF PLATE**

- 5. REMOVE COWL SIDE TRIM**

Remove the clip and cowl side trim.

- 6. REMOVE No.1 LOWER INSTRUMENT PANEL**

- (a) Remove the 2 screws.
- (b) Disconnect the hood lock control cable.
- (c) Remove the No.1 lower instrument panel.

- 7. REMOVE LH LOWER INSTRUMENT PANEL**

Remove the 4 bolts and LH lower instrument panel.

- 8. REMOVE LOWER INSTRUMENT FINISH PANEL**

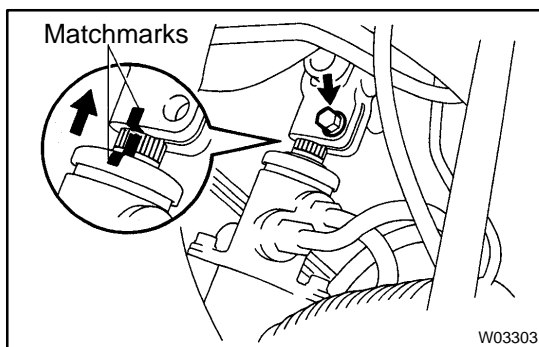
- 9. REMOVE COMBINATION SWITCH WITH SPIRAL CABLE**

- (a) Disconnect the 3 connectors.
- (b) Disconnect the airbag connector.
- (c) Remove the 3 screws and combination switch with spiral cable.

- 10. REMOVE SPIRAL CABLE (See page [BE-23](#))**

NOTICE:

Do not disassemble the cable or apply oil to it.



- 11. DISCONNECT INTERMEDIATE SHAFT ASSEMBLY**

- (a) Place matchmarks on the intermediate shaft and control valve shaft.
- (b) Remove the bolt and disconnect the intermediate shaft assembly.

- 12. REMOVE INTERMEDIATE SHAFT ASSEMBLY**

Remove the bolt and intermediate shaft assembly.

- 13. REMOVE STEERING COLUMN ASSEMBLY**

- (a) Disconnect the connectors.
- (b) Remove the 4 column assembly set nuts and steering column assembly.